

\$2,072,000 - On 47 Avenue, Sylvan Lake

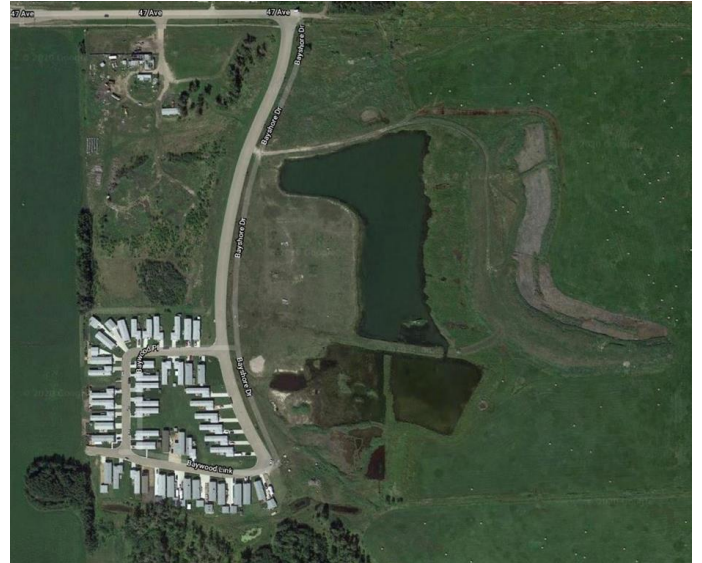
MLS® #A1042327

\$2,072,000

0 Bedroom, 0.00 Bathroom,
Land on 56 Acres

Lighthouse Point, Sylvan Lake, Alberta

CALLING ALL SAVVY INVESTORS! This vacant development land is ready for the right person with the right ideas! Zoned RF(Recreation Facility District), this section of land allows for open commercial recreation and entertainment facilities. Develop an RV Park, create a campgroundâ€ the decision is in your hands! Lighthouse Pointe is a community tucked away in a private retreat on the outer edge of Sylvan Lake, creating an environment of peace and tranquility while simultaneously having the luxury of being just minutes from all of Sylvan Lakeâ€™s amenities. This plot of land also offers easy access to highway 20, 11, and 11A! See supporting documents for the development guidelines, outlining the permitted and discretionary uses for this plot of land. Itâ€™s time to turn your vision into a reality!



Essential Information

MLS® #	A1042327
Price	\$2,072,000
Bathrooms	0.00
Acres	56.00
Type	Land
Sub-Type	Land
Status	Active

Community Information

Address	On 47 Avenue
---------	--------------

Subdivision	Lighthouse Point
City	Sylvan Lake
County	Red Deer County
Province	Alberta
Postal Code	T4S 0A8

Exterior

Lot Description	Near Shopping Center
-----------------	----------------------

Additional Information

Date Listed	October 15th, 2020
Days on Market	39
Zoning	RF

Listing Details

Listing Office	Trilliant Real Estate Group Ltd.
----------------	----------------------------------

MLS listings provided by Pillar 9™. Information Deemed Reliable But Not Guaranteed. The information provided by this website is for the personal, non-commercial use of consumers and may not be used for any purpose other than to identify prospective properties consumers may be interested in purchasing.